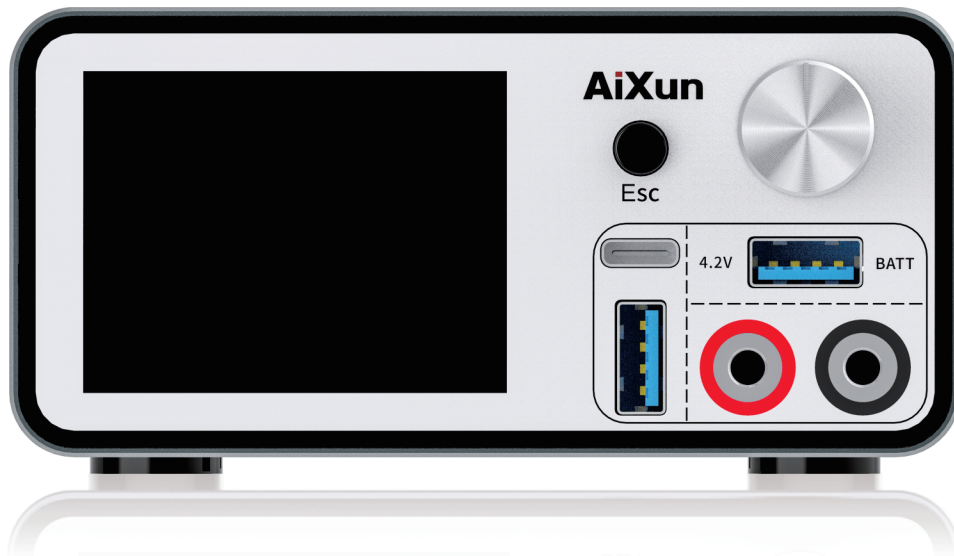


P2408S

Intelligent
regulated power supply

User Manual

Please read this manual carefully before use

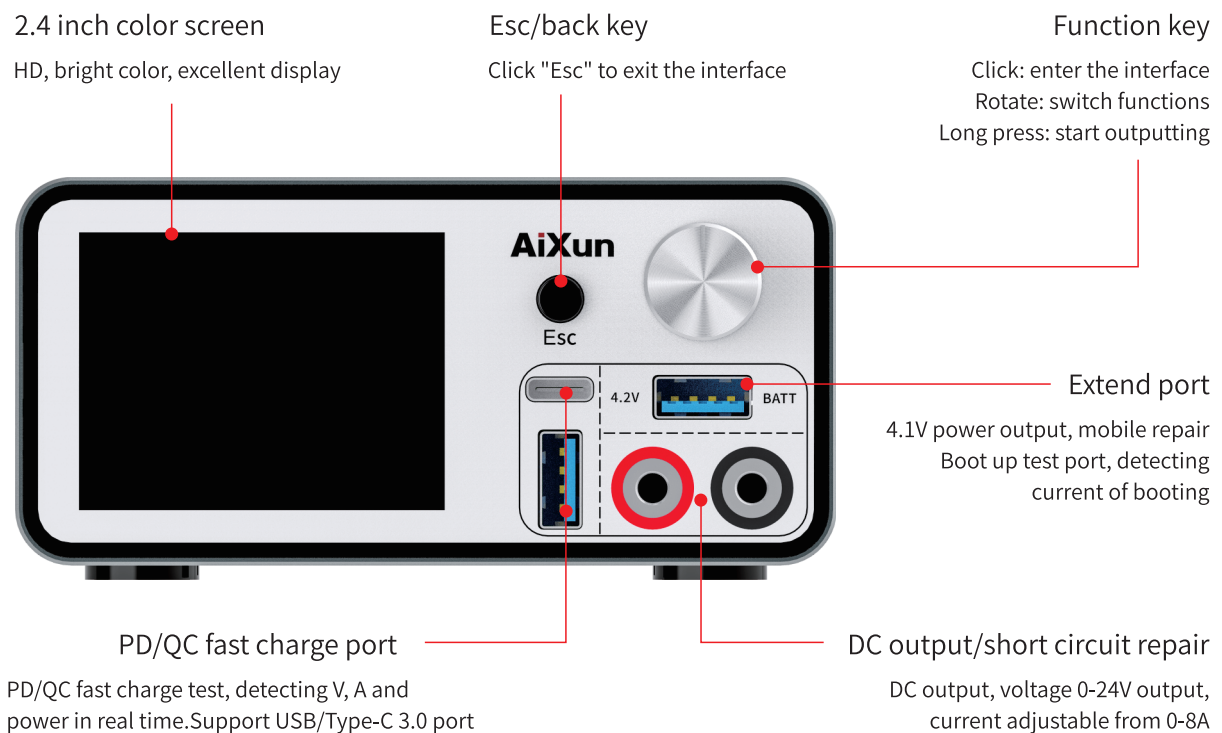


1 Product Features

- PD/QC fast charge test
- iPhone battery protocol, one key boot up
- 24V/8A smart adjustable DC regulated power supply
- Pointer, curve and digital display, comprehensive detection
- Short circuit and burn in detection
- Battery fast charging
- Remote software upgrade

2 Structures Introduction

Front side



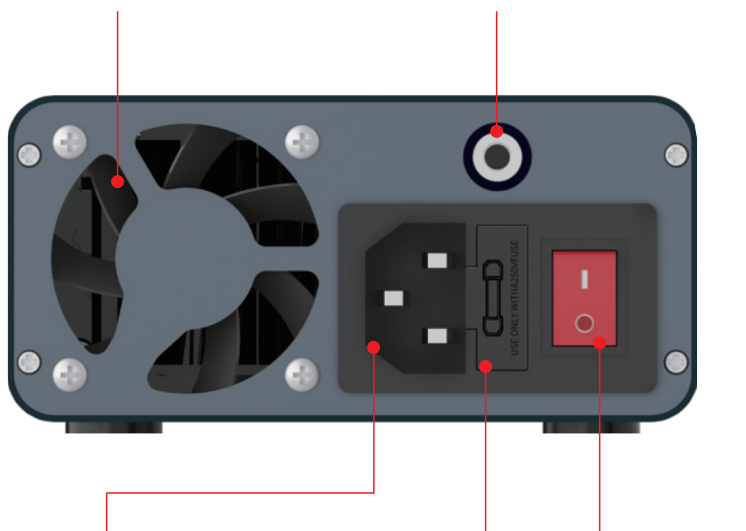
Back side

Cooling fan

Release the hot air inside the case

Grounding port

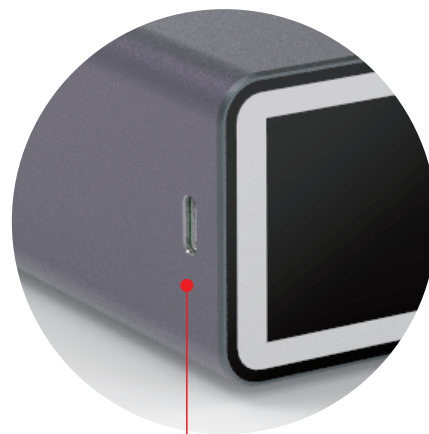
Anti static



Power cable port
AC power supply input

Fuse
Avoid damage

Power switch
On/off the power

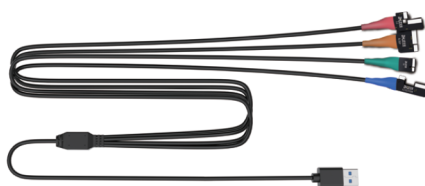


Type-C port
Connect to AiXun platform through this port for upgrading

Accessories



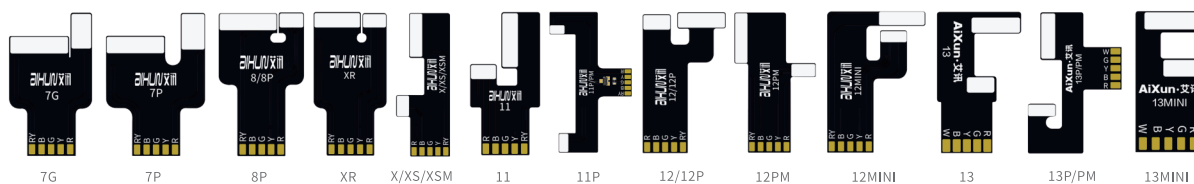
Power cable



USB HUB for booting up



Banana head cable



7-13 iPhone battery boot up FPC

3 Parameters

Host

Model:P2408S	Input voltage:110/220V	Output voltage:0-24V
Fast charge: PD/QC3.0	Input frequency:50Hz	Output current:0-8A
DPI: Voltage:0.01V	Current:0.001A	

PD/QC fast charge

USB Type-C and USB A output	2 BC1.2, Apple, Samsung protocols
2 Type-C Pd port output	2 MTK PE+1.1 and MMTK PE+2.0
2 Qualcomm QC2.0 and QC3.0	2 Huawei fast charge protocols SCP
2 Huawei fast charge protocols FCP	2 Spreadtrum fast charge protocols SFCP
2 Samsung fast charge AFC	
2 OPPO fast charge VOOC	

USB 3.0, 4.1V power supply output

Output voltage:4.1V	Protocols: PD battery	5V motherboard boot up signals
---------------------	-----------------------	--------------------------------

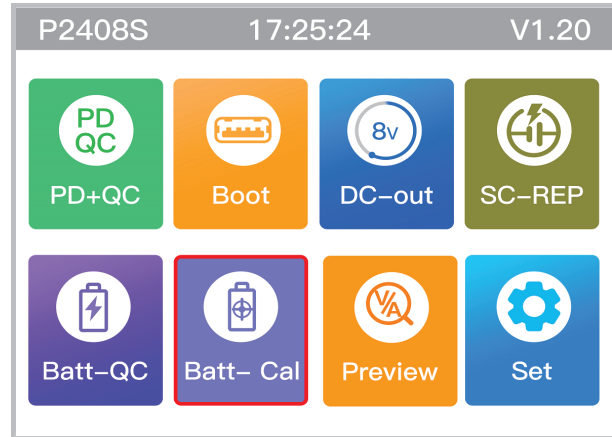
DC regulated output range

	Voltage range	Current range
Minimum value	0V	300mA
Maximum value	24V	8A

4 Product Operation

Host parameters

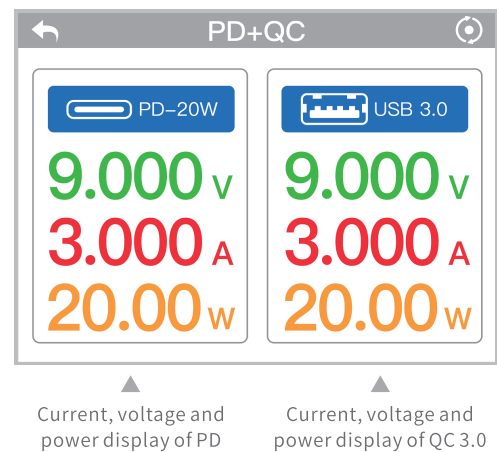
- APP icon display of every function
- Rotate the "function key" to switch functions
- Press the "function key" to enter the corresponding interface



PD/QC fast charge operation

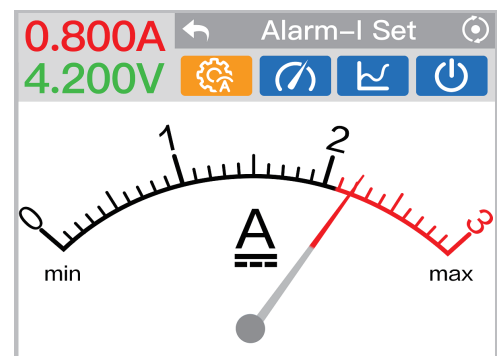
- 1. Rotate the knob to select the FC APP, press the knob to enter the interface
- 2. Connect mobile to P2408S with USB cable to observe the FC current, voltage and power.
- 3. Press "Esc" to exit

 **Note:**
PD and QC 3.0 can not test simutaneously



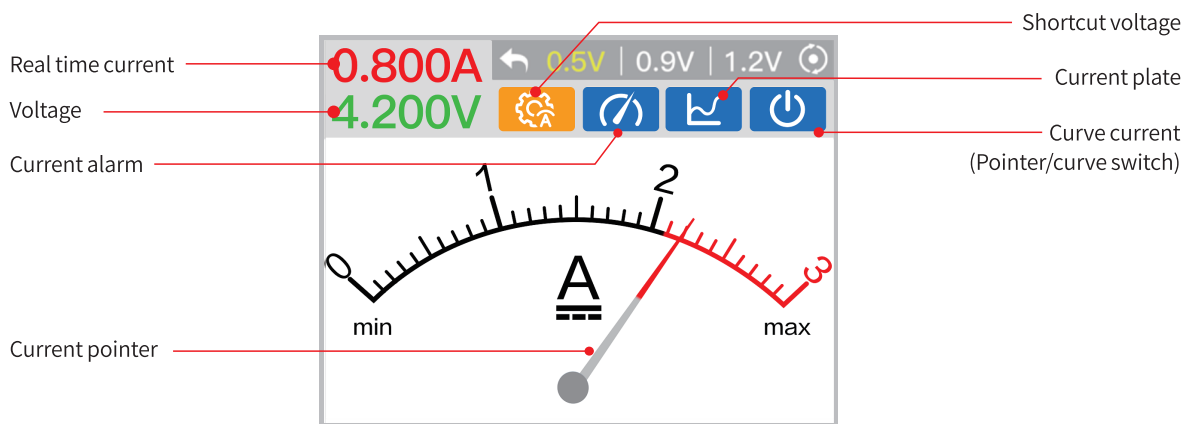
One key boot up operation

- 1. Rotate the knob to select the boot up cable App, 4.1V power supply output port, press the knob to enter the pointer display interface.
- 2. Rotate the knob to switch functions of "current alarm, current range, curve/poinhter switch, one key boot up". Press the knob to enter the interface and set current value.
- 3. Press "Esc" to exit.



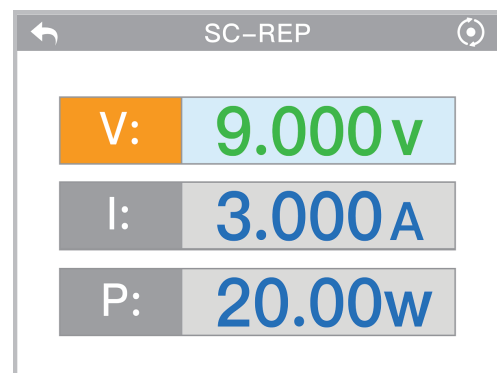
DC output

1. Rotate the knob to select the DC output App, press the knob to enter the interface.
2. Rotate the knob again to switch functions of "fast voltage, current alarm, current plate setting, curve/pointer switch, etc", press the knob to enter the corresponding interfaces, and press "Esc" to exit.
3. Voltage setting: rotate the knob to select the voltage, and rotate again to set the voltage, press "Esc" to exit.



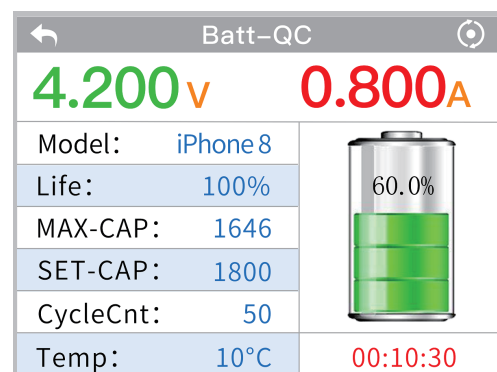
Short circuit repair

1. Rotate the knob to select the short circuit repair App, press the knob to enter the interface.
2. Connect mobile to P2408S with a USB cable to check the fast charge voltage, current and power value.
3. Press "Esc" to exit.



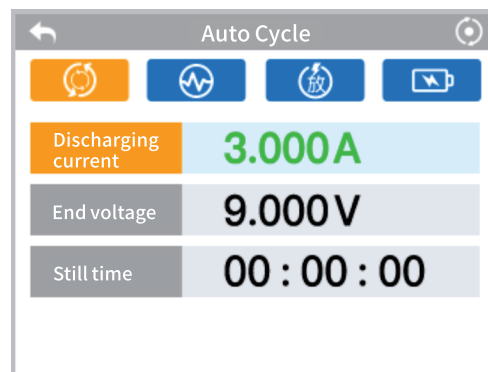
Battery fast charging

1. Rotate the knob to select the battery fast charging App, press the knob to enter the interface.
2. Connect a USB-A port on type-C, connect A port to the power cable socket, and the C port to the battery fast charging adaptor, then buckle the battery on the adaptor.
3. Press "Esc" to exit.



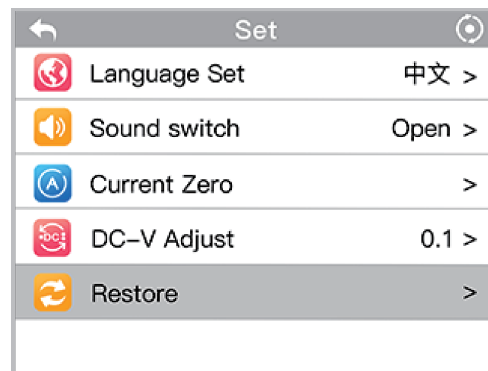
Battery calibration

- 1. Rotate the knob to select the battery calibration App, press the knob to enter the interface.
- 2. Connect a USB-A port on type-C, connect A port to the power cable socket, and the C port to the battery fast charging adaptor, then buckle the battery on the adaptor.
- 3. Press "Esc" to exit.



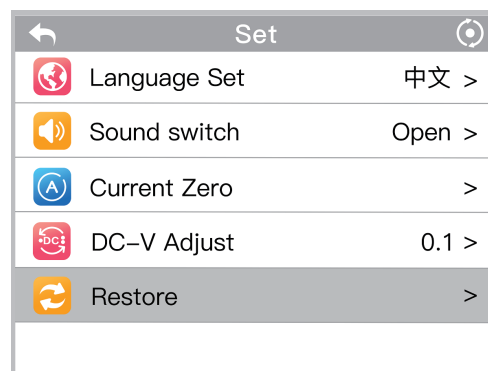
Settings

- 1. Rotate the knob to select the set App, press the knob to enter the interface.
- 2. It includes functions of "language, sound, current reset, DC voltage adjustment, restore, etc", press "Esc" to exit.



Current and voltage preview

- 1. Rotate the knob to select the preview App, press the knob to enter the interface.
- 2. It enables the preview of the voltage, current and power of PD/QC fast charge, one key boot up and DC output.



5 Cautions

- To avoid power supply damage and keep safe working environment, the following items should be observed:
 - The product uses a three wire grounding plug, which must be inserted in a three hole grounding socket. Do not change the plug or use an ungrounded three plug adaptor to avoid poor grounding. To lengthen the wire, please use a grounded three wire power cord.
 - Built-in precision electronics, non-professionals please do not disassemble without authorization.
 - Please adjust strictly according to the official parameters. Do not exceed the value range to prevent product damage and malfunction.
 - Do not test PD and QC fast charging simultaneously, or the accuracy will be affected.
 - Banana head DC output regulated power supply, red (+) and black (-), please connect strictly according to this. Do not reverse the connection, otherwise it will cause a short circuit.
 - Please do not mix metal flakes and wire debris into this product, otherwise it may cause electric shock, fire, or failure.
 - Replace fittings with original accessories.
 - If it is in idle for a long time, please place it in a dry environment.
 - Do not wet the power supply, and do not use it nor pull the power cord with wet hands.
 - Please strictly follow this manual when using.
 - This product has anti-static measures, please be sure to use grounding



This product has anti-static measures, please be sure to use grounding

6 After-sales

Warranty regulations

- The product is guaranteed for one year from the date of purchase (subject to the purchase certificate).
- The warranty service is only valid under normal use. All man-made damage, such as improper use of accessories, failure to use according to instructions, damage not caused by our company's repair, wrong use or negligence, the warranty service will immediately be invalid.
- The company has the final right to interpret the above regulations for users who do not comply with the above regulations.

AiXun

Address: 503, Building C4, Zhonghao Industrial City, Xiangjiaotang
Community, Bantian Street, Longgang District, Shenzhen

Hotline: (+ 86) - 400 175 8688

Official website: www.aixuntech.com

